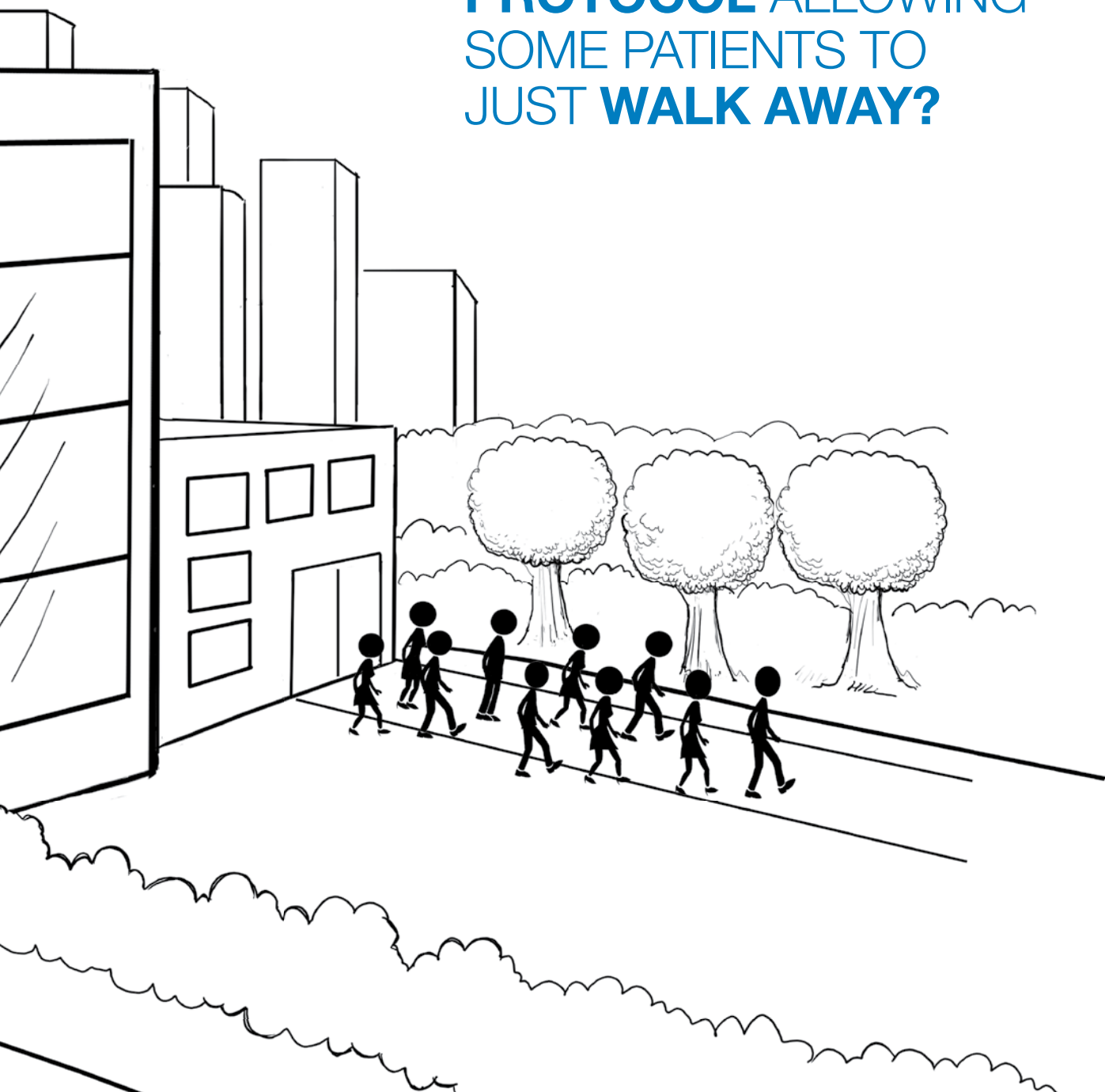


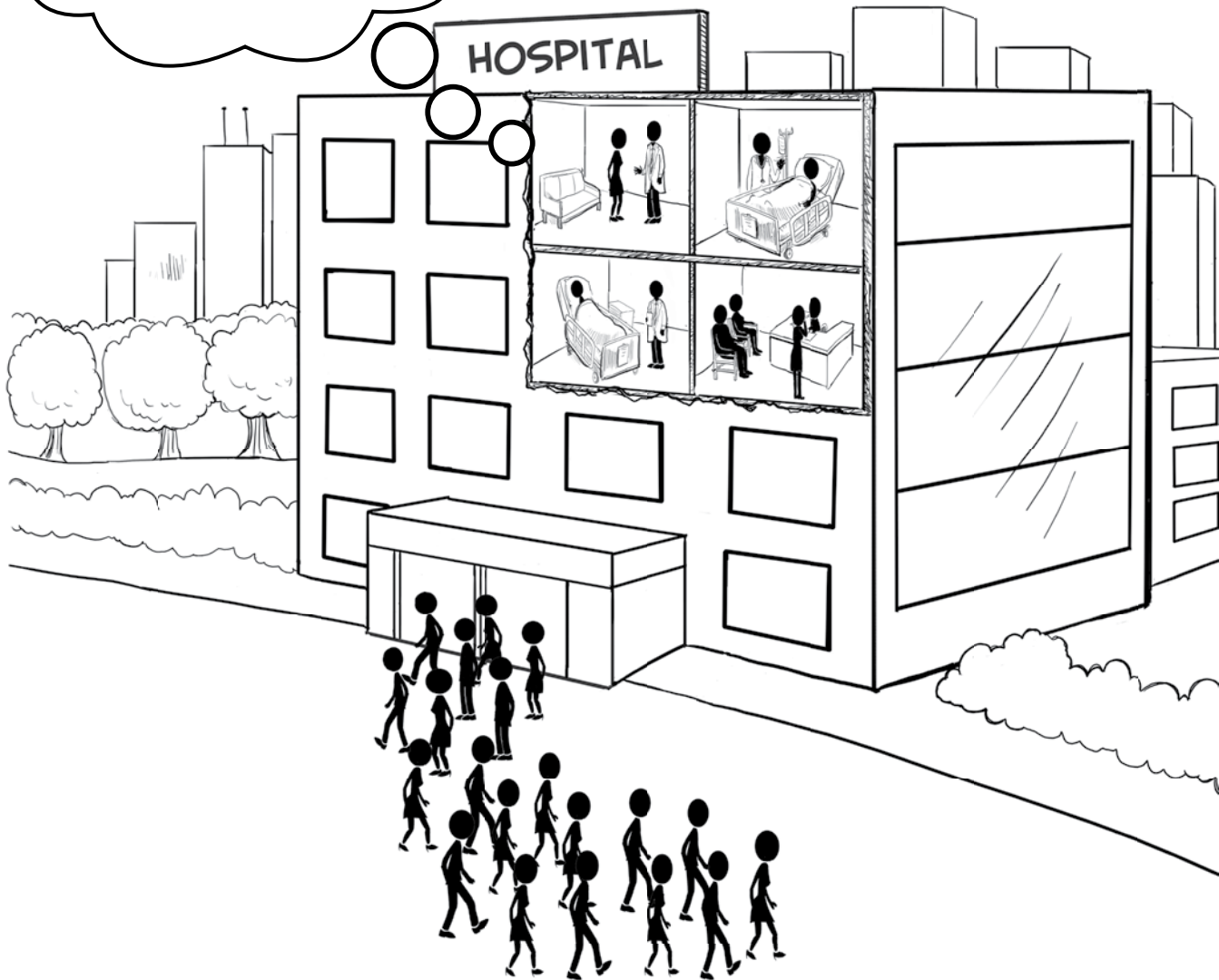
# ZOLL®

# LifeVest®

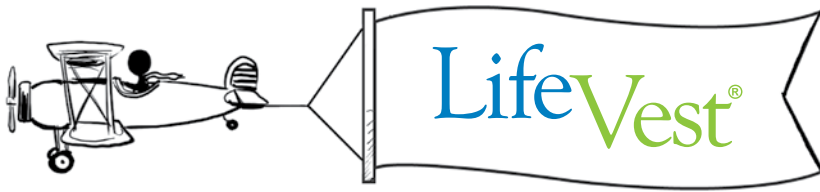
IS YOUR **HOSPITAL'S**  
**SCD RISK SCREENING**  
**PROTOCOL** ALLOWING  
SOME PATIENTS TO  
JUST **WALK AWAY?**



For every **100**  
patients identified  
with an EF  $\leq$  35%...



**63** are screened for SCD risk



**37**

**are not screened  
for SCD risk\***

**LifeVest® wearable cardioverter  
defibrillator (WCD) is part of the  
continuum of care for patients at high  
risk of sudden cardiac death (SCD):**

- Protection from SCD during medical therapy optimization.
- Protection from SCD during recovery from revascularization.
- Allows physician time to assess long-term arrhythmic risk.
- Patients return to the prescribing physician at the end of the ICD waiting periods (40 days post-MI and 90 days post-PTCA/post-CABG) to determine if:
  - LifeVest usage should be extended,
  - Long-term arrhythmic risk requires ICD implantation, or
  - Cardiac recovery has mitigated arrhythmic risk, and ongoing follow-up with optimized medical therapy is appropriate.



**Increase screening.  
Provide immediate protection.  
Save lives.**

Illustration Reference: Beinborn, D. Examining the Benefits of a Wearable Cardioverter Defibrillator Vest—Sudden Cardiac Arrest Background and Prevention. 2009.

\*Due to loss to follow-up, no Electrophysiology consult, or ICD waiting periods

Contact **ZOLL**  
24 hours a day, 7 days a week



For LifeVest customer support, technical support, or medical orders, please call **800.543.3267**



LifeVest medical orders and supporting documentation can be faxed to **866.567.7615**



For more LifeVest information, please visit **www.zoll.com** or email **LifeVest.Info@zoll.com**



Access LifeVest patient data and e-order through **LifeVestNetwork.zoll.com**

**ZOLL**® LifeVest®

ZOLL • Pittsburgh, PA  
p 800.543.3267 • f 866.567.7615 • [www.zoll.com](http://www.zoll.com)